

**IMPORTANT INFORMATION ON ATTACHING THE WALL BRACKETS TO THE WALL:**

All necessary fasteners are found in the Installation Kit included with your new Powersoak.

Use the #10 x 1-1/2 stainless flat Phillips head sheetmetal screws for this purpose. These screws (marked 29188) are for attaching faucet wall brackets to metal studs, FRP-over-plywood, 5/8 inch (16mm) drywall when used with toggle fasteners (marked 29191), or, when used with conical anchors (marked 29189), to tile or concrete.

All brackets **MUST** be installed. The standpipe, Item 8, is marked for placement of the wall brackets.

Trim the standoffs to length so that, when installed, the riser will be plumb.

When the standoff has been trimmed, slide the ferrel over the standoff, insert its end into the wall bracket, and tighten the nut.

Use a 5/32 inch (4mm) dia drill bit for pilot holes when fastening to studs or FRP-over-plywood.

**NOTE: NEVER INSTALL SHEETMETAL SCREWS IN DRYWALL WITHOUT THE USE OF A TOGGLE FASTENER.** If installing on drywall, see Toggle Installation Tips below. If installing on tile or concrete, see Anchor Installation Tips below.

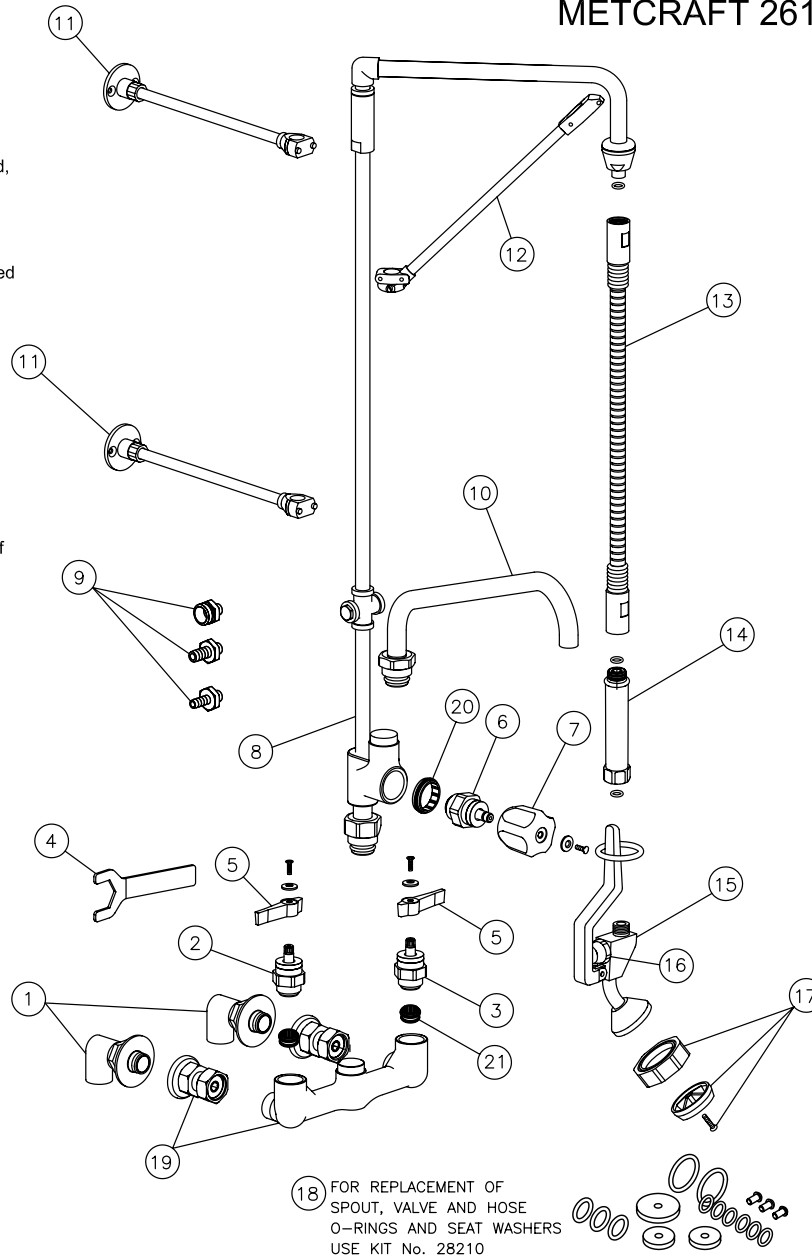
**Toggle Installation Tips**

Use only TOGGLER® BRAND TC® hollow-wall anchors with setting key included in Installation Kit.

1. Drill a 5/16 inch (8mm) diameter hole through the wall.
2. Fold the toggle fastener in the middle and tap it flush to the wall.
3. Insert the red "key" into the toggle fastener. Push the key inward to set the toggle, then withdraw the key. Never hammer the key. Refer to the pictographs on the TOGGLER® TC® anchor instruction sheet.
4. Insert the screw through the fixture and into the toggle fastener. Tighten flush, then stop.

**Anchor Installation Tips**

1. Using a masonry bit, drill a 1/4 inch (6.3mm) dia hole at least 1-1/2 inch (38mm) deep.
2. Blow all dust from the hole.
3. Drive the anchor into the hole until it's flush with the surrounding surface.
4. Insert the screw through the fixture and into the anchor.



18 FOR REPLACEMENT OF SPOUT, VALVE AND HOSE O-RINGS AND SEAT WASHERS USE KIT No. 28210

**METCRAFT 26155 PRE-RINSE WITH ADD-ON 3/4" FAUCET INSTALLATION GUIDE**

**TO ORDER SERVICE PARTS**  
800-444-9624

METCRAFT, INC.  
13910 KESSLER DRIVE  
GRANDVIEW, MO 64030

FAX 816-761-0544  
E-MAIL [service@powersoak.com](mailto:service@powersoak.com)

26155		
Item	Part Number	Description
1	29115	Mounting Kit
2	28212	Hot Valve Assembly
3	28211	Cold Valve Assembly
4	29111	1-3/8" Wrench
5	28227	Designer Handle Kit
6	29118	Add-on Valve Assembly
7	29119	Euro Handle Kit
8	28215	Add-on Faucet, Riser & Swivel Arm Assy
9	29112	3/8" NPT Hose Adapter Kit
10	28213	14" Spout
11	29113	Wall Bracket Assembly
12	29114	Support Bracket
13	28222	Hose Assembly
14	28217	Grip
15	28832	Angled Pre-Rinse Spray Assembly
16	28221	Pre-Rinse Valve Assembly
17	29134	Faceplate, Bumper & Screw
18	28210	O-Ring & Seat Washer Replacement Kit
19	29933	3/4" Faucet Body and Escutcheon Assembly
20	29529	Stainless Steel Seat
21	31057	Stainless Steel Seat