

**IMPORTANT INFORMATION ON ATTACHING THE WALL BRACKETS TO THE WALL:**

**METCRAFT 26982 PRE-RINSE WITH ADD-ON FAUCET INSTALLATION GUIDE**

All necessary fasteners are found in the Installation Kit included with your new Powersoak.

Use the #10 x 1-1/2 stainless flat Phillips head sheetmetal screws for this purpose. These screws (marked 29188) are for attaching faucet wall brackets to metal studs, FRP-over-plywood, 5/8 inch (16mm) drywall when used with toggle fasteners (marked 29191), or, when used with conical anchors (marked 29189), to tile or concrete.

All brackets **MUST** be installed. The standpipe, Item 7, is marked for placement of the wall brackets.

Trim the standoffs to length so that, when installed, the riser will be plumb.

When the standoff has been trimmed, slide the ferrul over the standoff, insert its end into the wall bracket, and tighten the nut.

Use a 5/32 inch (4mm) dia drill bit for pilot holes when fastening to studs or FRP-over-plywood.

**NOTE: NEVER INSTALL SHEETMETAL SCREWS IN DRYWALL WITHOUT THE USE OF A TOGGLE FASTENER.** If installing on drywall, see Toggle Installation Tips below. If installing on tile or concrete, see Anchor Installation Tips below.

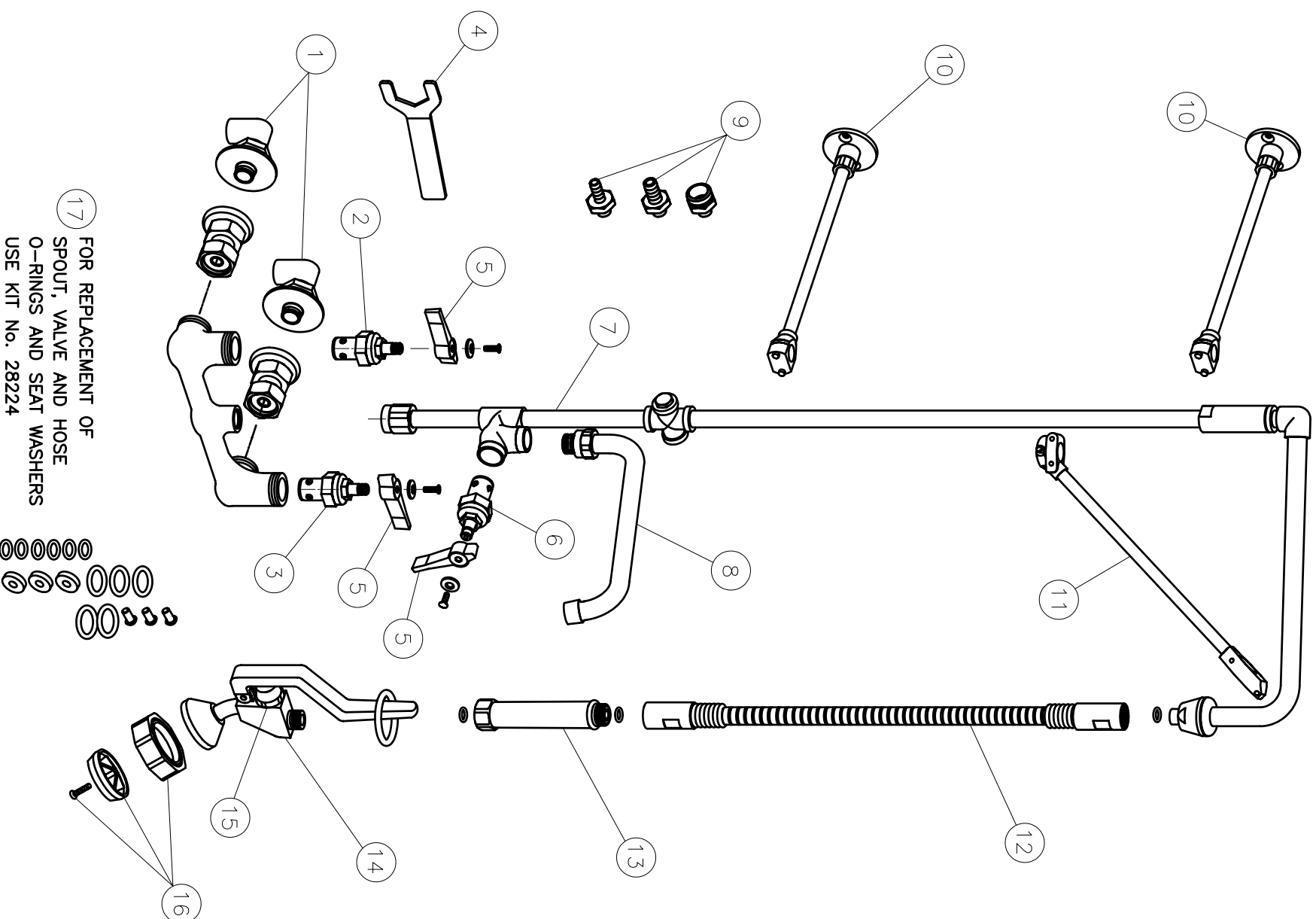
**Toggle Installation Tips**

Use only TOGGLER® BRAND TC® hollow-wall anchors with setting key included in Installation Kit.

1. Drill a 5/16 inch (8mm) diameter hole through the wall.
2. Fold the toggle fastener in the middle and tap it flush to the wall.
3. Insert the red "key" into the toggle fastener. Push the key inward to set the toggle, then withdraw the key. Never hammer the key. Refer to the pictographs on the TOGGLER® TC® anchor instruction sheet.
4. Insert the screw through the fixture and into the toggle fastener. Tighten flush, then stop.

**Anchor Installation Tips**

1. Using a masonry bit, drill a 1/4 inch (6.3mm) dia hole at least 1-1/2 inch (38mm) deep.
2. Blow all dust from the hole.
3. Drive the anchor into the hole until it's flush with the surrounding surface.
4. Insert the screw through the fixture and into the anchor.



**TO ORDER SERVICE PARTS**  
800-444-9624

**METCRAFT, INC.**  
13910 KESSLER DRIVE  
GRANDVIEW, MO 64030

FAX 816-761-0544  
E-MAIL [service@powersoak.com](mailto:service@powersoak.com)

**26982**

Item	Part Number	Description
1	29110	Mounting Kit
2	28220	Hot Valve Assembly
3	28219	Cold Valve Assembly
4	29111	1-3/8" Wrench
5	28227	Designer Handle Kit
6	28225	Add-On Valve Assembly
7	28229	Add-on Faucet, Riser & Swivel Arm Assy
8	28216	14" Spout
9	29112	3/8" NPT Hose Adapter Kit
10	29113	Wall Bracket Assembly
11	29114	Support Bracket
12	28222	Hose Assembly
13	28217	Grip
14	28832	Angled Pre-Rinse Spray Assembly
15	28221	Pre-Rinse Valve Assembly
16	29134	Faceplate, Bumper & Screw
17	28224	O-Ring & Seat Washer Replacement Kit

**FOR REPLACEMENT OF SPOUT, VALVE AND HOSE O-RINGS AND SEAT WASHERS USE KIT No. 28224**