

**IMPORTANT INFORMATION ON ATTACHING THE WALL HOOK TO THE WALL:**

All necessary fasteners are found in the Installation Kit included with your new Powersoak.

Use the #10 x 1-1/2 stainless flat Phillips head sheetmetal screws for this purpose. These screws (marked 29188) are for attaching the wall hook to metal studs, FRP-over-plywood, 5/8 inch (16mm) drywall when used with toggle fasteners (marked 29191), or, when used with conical anchors (marked 29189), to tile or concrete.

Use a 5/32 inch (4mm) dia drill bit for pilot holes when fastening to studs or FRP-over-plywood.

**NOTE: NEVER INSTALL SHEETMETAL SCREWS IN DRYWALL WITHOUT THE USE OF A TOGGLE FASTENER.** If installing on drywall, see Toggle Installation Tips below. If installing on tile or concrete, see Anchor Installation Tips below.

**Toggle Installation Tips**

Use only TOGGLER® BRAND TC® hollow-wall anchors with setting key included in Installation Kit.

1. Drill a 5/16 inch (8mm) diameter hole through the wall.

2. Fold the toggle fastener in the middle and tap it flush to the wall.

3. Insert the red "key" into the toggle fastener. Push the key inward to set the toggle, then withdraw the key. Never hammer the key. Refer to the pictographs on the TOGGLER® TC® anchor instruction sheet.

4. Insert the screw through the fixture and into the toggle fastener. Tighten flush, then stop.

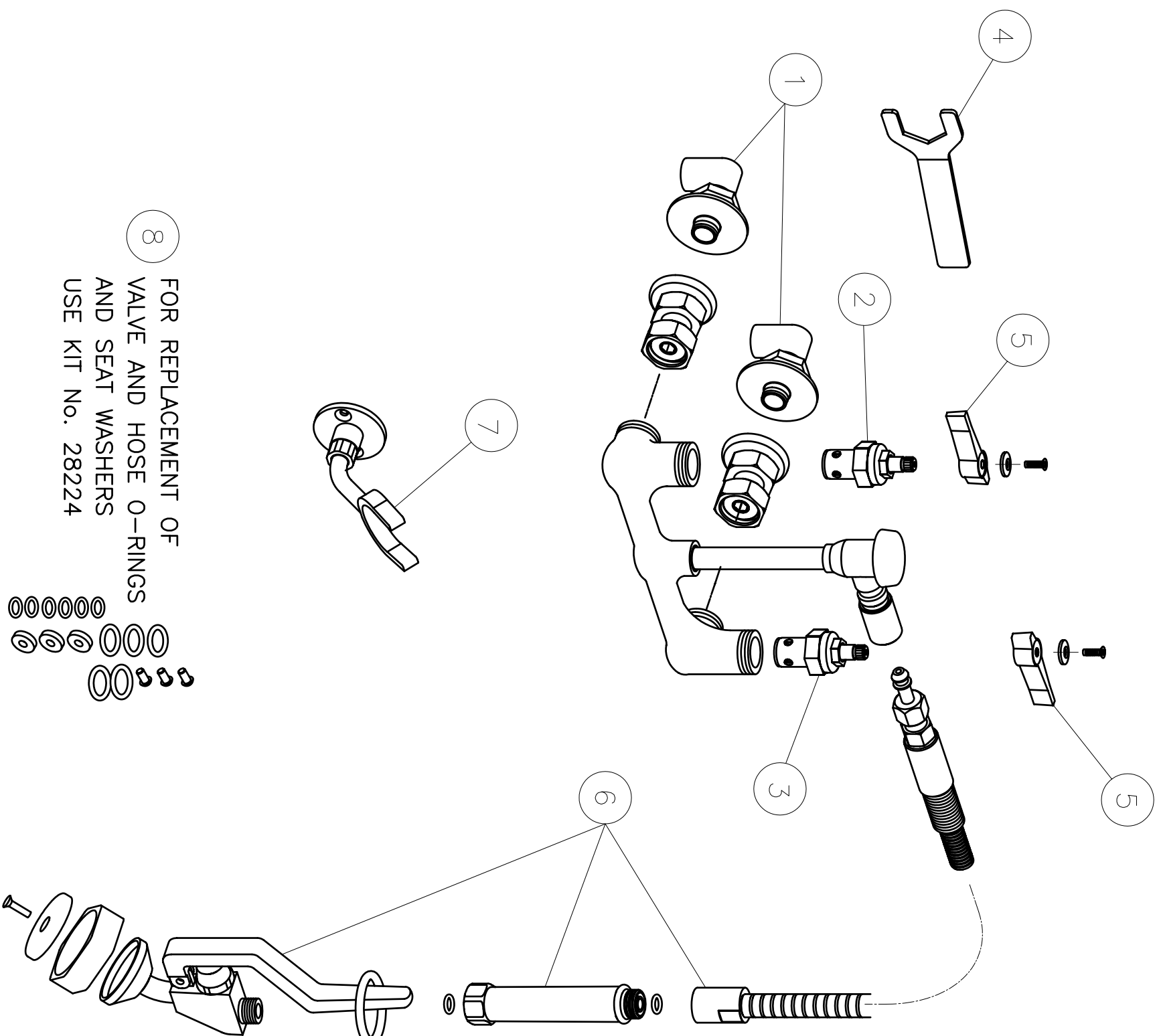
**Anchor Installation Tips**

1. Using a masonry bit, drill a 1/4 inch (6.3mm) dia hole at least 1-1/2 inch (38mm) deep.

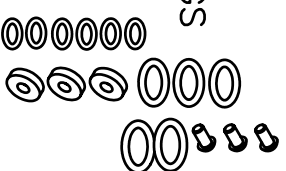
2. Blow all dust from the hole.

3. Drive the anchor into the hole until it's flush with the surrounding surface.

4. Insert the screw through the fixture and into the anchor.



FOR REPLACEMENT OF  
VALVE AND HOSE O-RINGS  
AND SEAT WASHERS  
USE KIT No. 28224



**METCRAFT 26984 SECURITY PRE-RINSE  
INSTALLATION GUIDE**

**TO ORDER SERVICE PARTS**  
800-444-9624

METCRAFT, INC.  
13910 KESSLER DRIVE  
GRANDVIEW, MO 64030

FAX 816-761-0544  
E-MAIL [service@powersoak.com](mailto:service@powersoak.com)

**26984**

Item	Part Number	Description
1	29110	Mounting Kit
2	28220	Hot Valve Assembly
3	28219	Cold Valve Assembly
4	29111	1-3/8" Wrench
5	28227	Designer Handle Kit
6	28226	Hose Assembly with Utility Spray
7	29117	Wall Hook Assembly
8	28224	O-Ring & Seat Washer Replacement Kit