

METCRAFT 26985 REAR EXIT DRAIN INSTALLATION GUIDE

TO ORDER SERVICE PARTS
800-444-9624

METCRAFT, INC.
903 E. 104th Street, Suite 130
Kansas City, MO 64131

FAX 816-761-0544
E-MAIL service@powersoak.com

1. Remove the flange (2), slip ring (3), and head gasket (4) from the drain body. The flange is the ring with the internal threads that functions like a nut to clamp the drain to the bottom of the sink. The slip ring is the thin, clear plastic piece. The head gasket is the black rubber ring.

2. Make a 1/4 inch (6mm) thick, 3-3/4 inch (95mm) diameter donut by rolling some of the plumber's putty in the installation kit into a rope and then pinching the ends together.

3. Thoroughly clean and dry the recess made for the drain in the bottom of the sink.

4. Place the donut in the recess on the INSIDE of the sink.

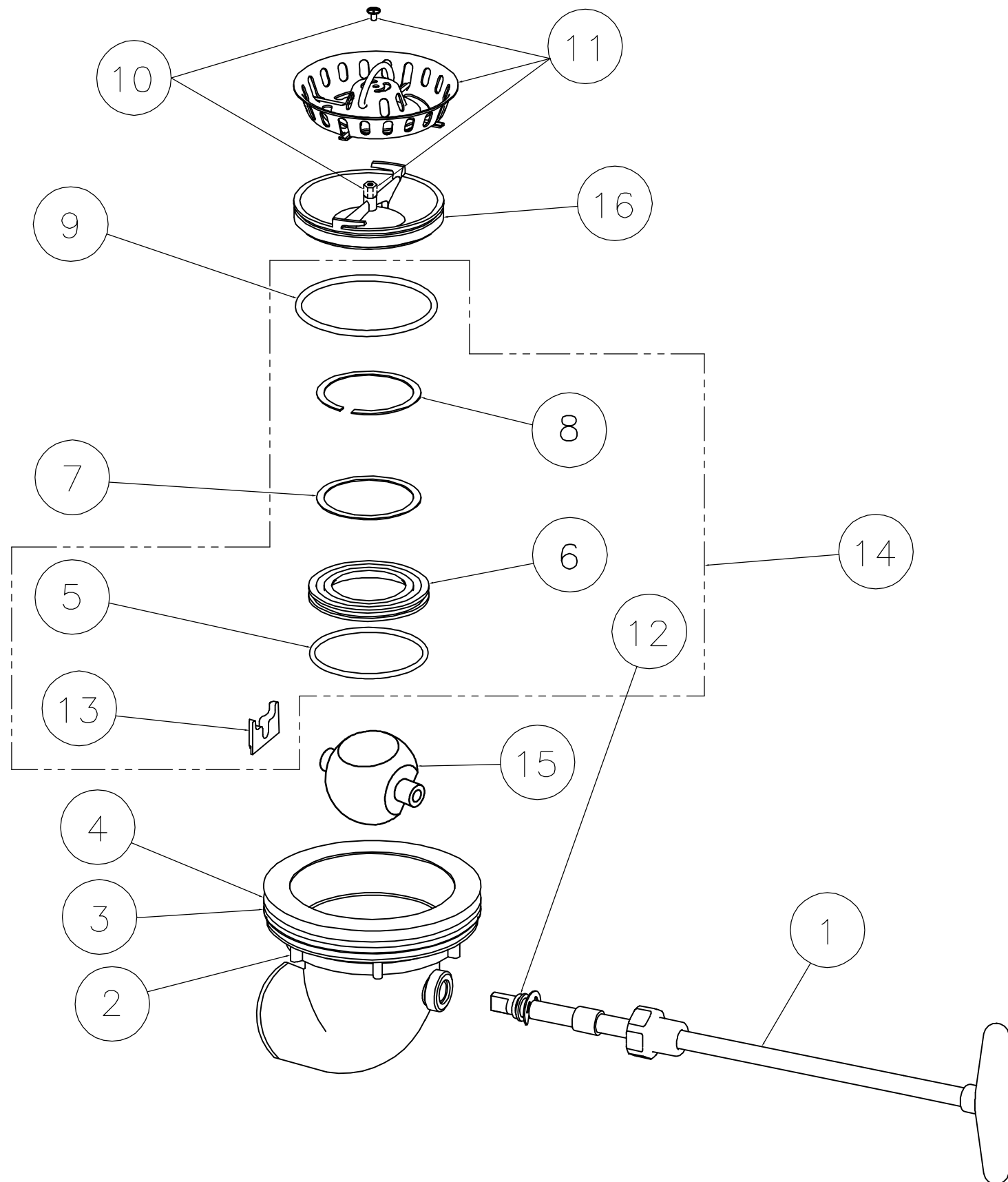
5. Pass the drain body through the hole in the sink, allowing it to rest on the putty donut.

6. From the underside of the sink, install the head gasket first.

7. Next, install the slip ring; it belongs UNDER the head gasket, NOT between the head gasket and the underside of the sink.

8. Finally, install the flange (like a nut) with the six tabs toward the floor. Aim the discharge of the drain, then tighten the flange until the putty squishes out and the drain body can no longer swivel.

9. Wipe off the excess putty when finished.



26985

Item	Part Number	Description
1	29130	Handle Assembly
2	29120	Flange Nut
3	29121	Slip Ring
4	29122	Head Gasket
5	29123	Seat O-ring (sold only in repair kit, 29135)
6	29124	Seat (sold only in repair kit, 29135)
7	29125	Backup Ring
8	29126	Wave Spring (sold only in repair kit, 29135)
9	29127	Retainer O-ring
10	29128	Security Screw Kit
11	28209	Strainer Assembly w/ Security Screw Kit, 29128
12	29133	Handle O-ring (sold only in Repair Kit, 29135)
13	29194	Trunion (sold only in Repair Kit, 29135)
14	29135	Repair Kit
15	29200	Ball
16	32110	Retainer