



# CAPKOLD® COOK-CHILL SYSTEMS

## GAS TILTING KETTLE MODEL DH-100

CapKold® Model DH-100 gallon working capacity, self-contained, high efficiency 360,000 BTU/hr gas fired, hemispheric bottom steam jacketed kettle. Electrically driven worm gear tilts kettle body to simplify product loading, kettle cleaning and transfer of non-pumpable products. 50 PSI maximum jacket operating pressure, 3" air operated drop down outlet valve.

### CONSTRUCTION

- 50 PSI, ASME Code hemispheric bottom kettle jacket construction and National Board registered
- C.S.A. Design Certified and NSF listed
- High efficiency fin tube gas heat exchanger with 360,000 BTU/hr maximum power input
- Reinforced bar rim and flow control pouring lip
- Electrically driven worm gear tilt of kettle body for pouring and cleaning
- Electronic ignition
- 3" air operated drop down stainless steel outlet valve mounted flush to kettle bottom
- Type 316 stainless steel kettle interior and all wetted parts, type 304 elsewhere
- 3/4" rim mounted water fill faucet
- Compressed air connection for CapKold® Pump/Fill Station (see CKPF/3)
- 100 gallon working capacity
- NSF listed

### INTEGRAL CONTROL PACKAGE:

- Android touch screen comes with English or Spanish, Gallons or Liters, and Fahrenheit or Celsius at a touch
- Digital product temperature indicator/controller
- Pilot light indicator
- Power ON indicator light
- Kettle body tilt switch and indicator
- Low water (kettle jacket) indicator light
- Pre-set automatic water metering with real time display

**ORIGIN OF MANUFACTURE:** Designed and manufactured in the United States.

PROJECT NAME:

LOCATION:

ITEM NO:

QTY:

MODEL NO:

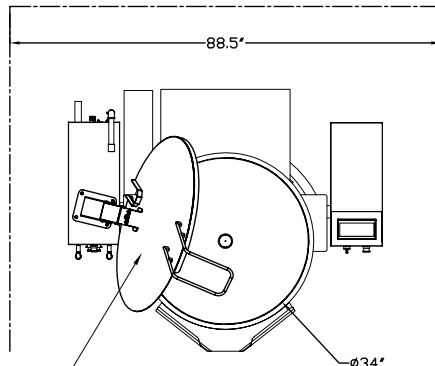
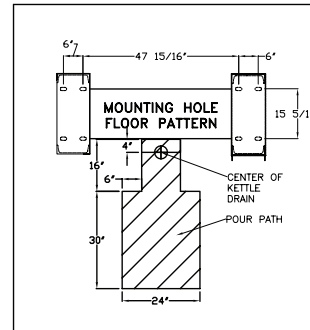
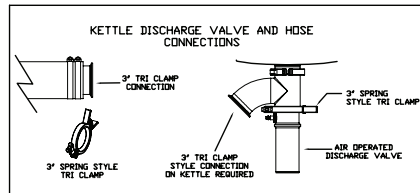
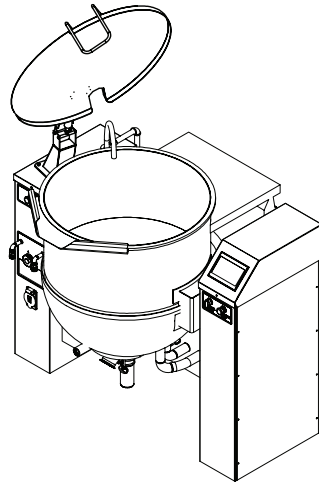
AIA NO:

SIS NO:



### OPTIONS/ACCESSORIES:

- Product temperature paperless chart recorder saves data as a PDF
- 2 piece hinged cover
- Removable pouring lip mounted product strainer
- Prison package



#51 POWER AID COVER

**PRODUCT SPECIFICATIONS:**

1. ALL DIMENSIONS ARE EQUIPMENT DIMENSIONS			
2. INPUT RATE: MAX 300,000 BTU/HR			
3. ELECTRICAL SUPPLY VOLTAGE: 208/5/60 - 11 AMPS - 20 AMP SERVICE ELECTRICAL CONNECTION 1/2" CONDUIT			
4. TOUCH SCREEN CONTROL			
5. 1" NPT GAS SUPPLY			
INCOMING GAS SUPPLY PRESSURES			
GAS TYPE	MINIMUM	MAXIMUM	
NATURAL	7" W.C.	14" W.C.	
6. 50 PSI ASME APPROVED			
7. NO AGITATOR			
8. ELECTRIC MOTOR DRIVEN POWER TILT FEATURE			
9. APPROX. SHIPPING WEIGHT: 1550 LBS			
10. COLD WATER SUPPLY - 3/4" HOSE CONNECTION 10 GPM @ 30 PSI (SUPPLY 30 PSI MIN. & 60 PSI MAX.)			
12. 12" SERVICE CLEARANCE REQUIRED			
13. UNIT MUST BE MOUNTED ON NON-COMBUSTIBLE FLOORING AND SEALED AT BASE WITH CAULKING.			

